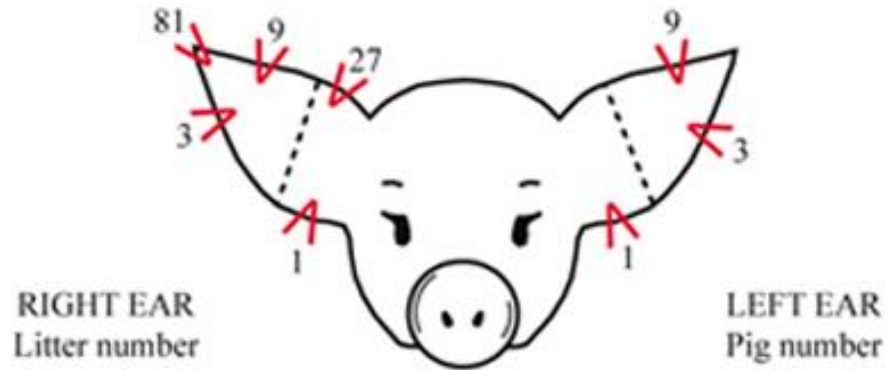


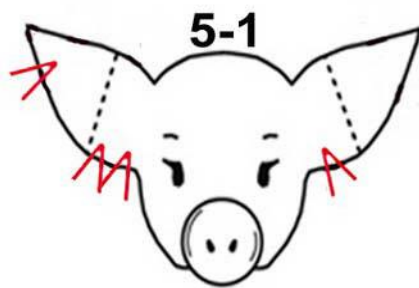
Information and Examples of RFID Tags and Ear Notches

Ear Notches: People ear notch pigs for a way to have a permanent ID for each pig because it is inexpensive, it can't be chewed off, and it never falls out like an ear tag would. Ear notching is used to tell you what litter the pigs are from and individually which pig it is. The pig's right ear shows the litter number. The pig's left ear shows the individual identification in its litter.

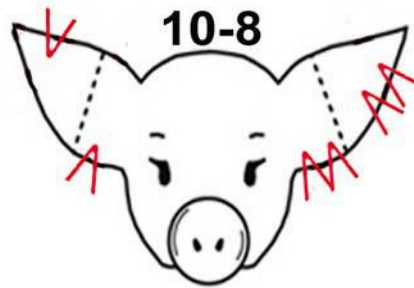
The notches shown in the picture are the universal notches and locations. Each location has a different number assigned to it. You add up the notches on each ear to determine the litter number and pig number.



Examples:



5th Litter and 1st pig in litter
Notches $3+1+1=5$ and 1 notch in 1 position



10th Litter and 8th pig in litter
Notches $9+1=10$ and $3+3+1+1=8$

RFID Tags: RFID tags are a type of tracking system that uses smart barcodes in order to identify items. RFID is short for "radio frequency identification," and as such, RFID tags utilize radio frequency technology. These radio waves transmit data from the tag to a reader, which then transmits the information to an RFID computer program. This is useful in being able to track animals back to their farm of origin in the event of disease outbreak.

